

For Multi-Picture Tour Go To
www.mitten-realty-services.com



18529 60A Ave, Surrey

\$539,800.00

Gorgeous Updated Family Home **1759 Sq. Ft Updated Split Level In Desirable Eaglecrest**

Spectacular split level home in desirable Eaglecrest boasts extensive updating including gorgeous hardwood floors, designer paint and decor, attractive wainscoting and woodwork, updated baths with low flow toilets, four to five year old roof and so much more. Gorgeous hardwood floors highlight the entertainment sized living room and adjoining dining room with recessed hutch alcove and glass door to kitchen. Updated kitchen with attractive cabinets, tile backsplash, moveable island, and door to spacious deck. Lower level with family room with gorgeous wainscoting, laminate floor, attractive fireplace with updated mosaic tile mantle and door to covered patio. Laundry with cabinets and tub. Upper level boasts three bedrooms including master bedroom with gorgeous hardwood floors, walk-in closet, three piece ensuite and door to private patio. Double garage. Gate to gravel side yard.

For Further Details Or Private Viewing Call:

Doug or Bonnie Mitten

at



Prudential

Power Play
Realty

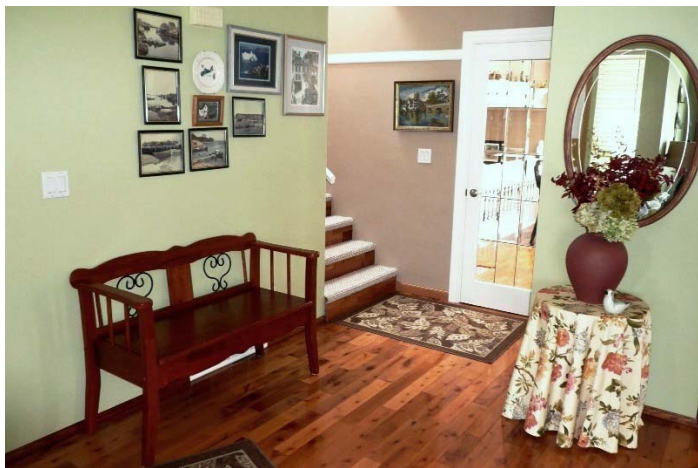
604-533-3231

All information contained in this brochure while thought to be reliable is not guaranteed to be accurate and should be verified by the purchaser.

Features Of This Fine Home...

Main Level: 641 Square Feet

Entrance Hall – 5.83' x 12' – Entrance with hardwood floor welcomes you to this fine home.



Living Room – 18' x 12.75' – Entertainment sized living room with bay window & gorgeous hardwood flooring.



Dining Room – 10.58' x 10' – More formal dining entertaining is facilitated in the dining room with hutch alcove and attractive gorgeous hardwood flooring.



Kitchen – 18.66' x 8.5' – Gorgeous updated kitchen with attractive cabinets, tile back splash, dual fuel stove, and eating area with a moveable island and a door to rear deck



Lower Level: 467 Square Feet

Family Room – 20.08' x 13.33' – Family fellowship & casual entertaining is facilitated in the family room with sliding door to rear patio, laminate flooring, attractive fireplace with mosaic tile mantle and gas log set.



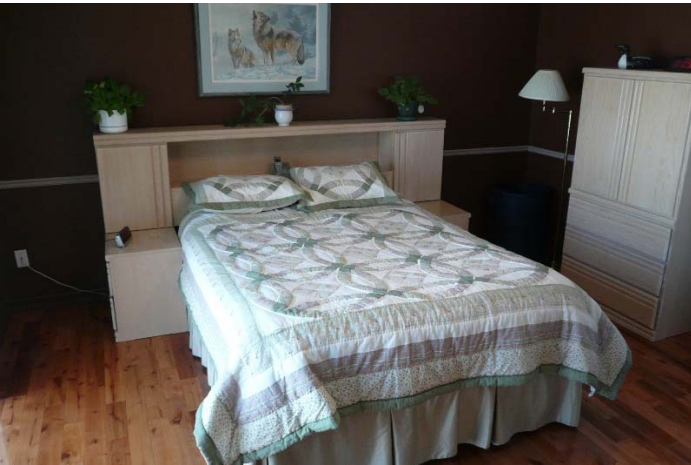
Laundry – 9.83' x 9.75'



Powder Room - 2 Piece

Upper Level: 651 Square Feet

Master Bedroom – 13.5' x 13' – Spacious master with hardwood floors, walk-in closet, **3 piece ensuite** and sliding glass door to private deck.



Bedroom – 10.5' x 10'



Bedroom – 10' x 10'

Main Bath - 3 Piece – Attractively completely updated main bathroom.

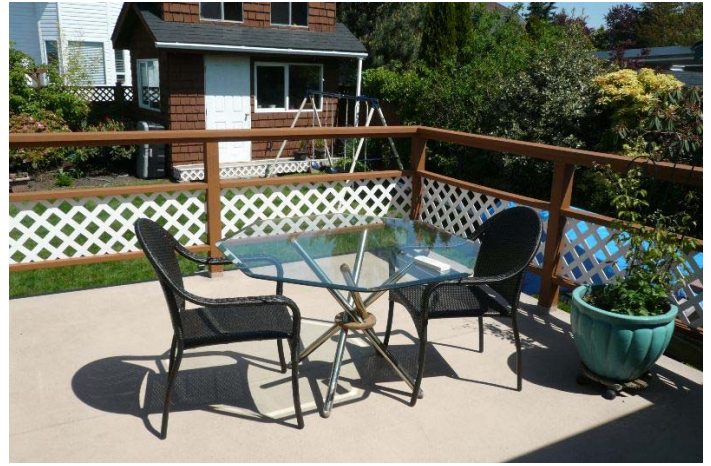


Features Of This Fine Home...

- ★ **Spectacular Split Level Home In Desirable Eaglecrest Boasts Extensive Updating Including Gorgeous Hardwood Floors, Designer Paint And Decor, Attractive Wainscoting And Woodwork, Updated Baths With Low Flow Toilets, Four To Five Year Old Roof And So Much More.**



- ★ **Gorgeous Hardwood Floors Highlight The Entertainment Sized Living Room And Adjoining Dining Room With Recessed Hutch Alcove And Glass Door To Kitchen.**
- ★ **Updated Kitchen With Attractive Cabinets, Tile Backsplash, Moveable Island, And Door To Spacious Deck.**
- ★ **Lower Level With Family Room With Gorgeous Wainscoting, Laminate Floor, Attractive Fireplace With Updated Mosaic Tile Mantle And Door To Covered Patio.**
- ★ **Upper Level Boasts Three Bedrooms Including Master Bedroom With Gorgeous Hardwood Floors, Walk-In Closet, Three Piece Ensuite And Door To Private Patio.**
- ★ **Two Decks & Covered Patio.**



- ★ **107 Square Foot Shed**



- ★ **Double Garage.**
- ★ **Gate To Gravel Side Yard.**
- ★ **Attractive Updated Family Home In Very Desirable Area.**

Lot: 80.64' x Irregular- 7094 Sq. Ft



For Further Details Or Private Viewing Call:

Doug or Bonnie Mitten

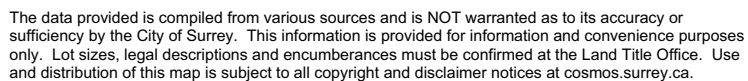
at



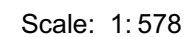
Prudential

**Power Play
Realty**

604-533-3231



18529 60a aerial map



Map created on: May-13-12

Legend

- ☐ Lots (Outline)

☐ Road Names250_1000

☒ Zoning Boundaries

Aerial Photo April/May 2011

☒ Red: Band_1

☒ Green: Band_2

☒ Blue: Band_3

Hooks

Lots

☒ BC Gas

☒ BC Hydro

☒ BC Rail Standard Lot

☒ BN Rail Standard Lot

☒ CN Rail

☒ City Land Standard Lot

☒ City Land Strata

☒ FRPA Foreshore Tenure

☒ Federal Standard Lot

☒ GVRD Standard Lot

☒ Harbour Board Standard Lot

☒ Park - City Dedicated

☒ Park - City Purchased

☒ Park - Provincial

☒ Park - Regional

☒ Private Standard

☒ Private Strata

☒ Provincial Standard

☒ Road

☒ School Standard Lot

☒ Transit Standard Lot