

**For Multi-Picture Tours Go To:
www.mitten-realty-services.com**



#410 19320 65 Avenue, Cloverdale

\$247,800.00

**Gorgeous Top Floor Apartment With Vaulted Ceiling & Mountain View
2 Bedroom, 2 Bathroom, 2 Parking Stalls**

Attractive Dark Laminate & Tile Floors, Granite Counters In Desirable Esprit Complex

Attractive, neat and clean, two bedroom, two bathroom, top floor apartment with view of the mountains and two parking stalls. Boasting attractive decor, vaulted ceilings, dark laminate floors in the living room/ dining room and tile floors in the entrance, kitchen and bathrooms, attractive kitchen with stainless appliances, granite counters with breakfast bar and adjoining pantry/laundry room. Terrific floor plan with 2 bedrooms separated by the living room and dining room with a vaulted ceiling, electric fireplace and patio door to covered deck.

Master bedroom with walk in closet and three piece ensuite with oversized shower and granite counters.

Second bedroom with adjoining four piece bathroom with granite counters. Two side by side parking stalls. Enjoy life in this awesome unit with vaulted ceilings, attractive decor, two bedrooms, two bathrooms and two parking stalls. Club house /recreation center with library, exercise room and bathroom.

Doug or Bonnie Mitten



604-533-3231

Living Area: 869 Square Feet

Living Room/Dining Room 11'4 x 16'4

Living room has a cozy fireplace, vaulted ceiling and dark laminate floors



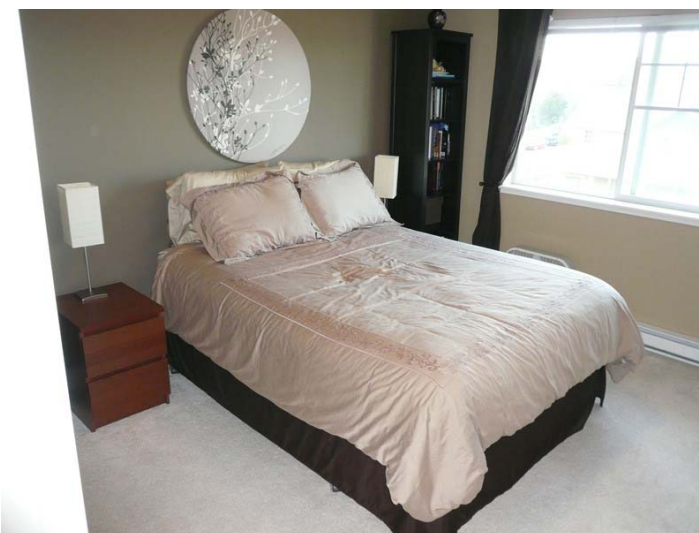
Dining Area



Kitchen: 11'6 x 7'9 - Attractive kitchen with stainless appliances & granite counters with breakfast bar.



Master Bedroom: 12'4 x 10'8 - The Master Bedroom has a walk in closet and 3 piece ensuite.



3 Piece Master Ensuite: Master ensuite has granite counter and an attractive shower with a glass door.



Bedroom: 9'4 x 9' - Bright full sized second bedroom



4 Piece Main Bathroom:



Laundry Room/Pantry: 7'7x 4'4



FEATURES OF THIS FINE HOME:

- ⌘ **Attractive, Neat & Clean, 2 Bedroom, 2 Bathroom Top Floor Apartment With View Of The Mountains.**
- ⌘ **Boasting Attractive Decor, Vaulted Ceilings, Dark Laminate Floors In The Living Room/ Dining Room & Tile Floors In Entrance, Kitchen & Bathrooms.**
- ⌘ **Attractive Kitchen With Stainless Appliances, Granite Counters With Breakfast Bar & Adjoining Pantry/Laundry Room.**
- ⌘ **Terrific Floor Plan With 2 Bedrooms Separated By The Living Room And Dining Room With Vaulted Ceiling, Electric Fireplace & Patio Door To Covered Deck.**
- ⌘ **Master Bedroom With Walk In Closet And 3 Piece Ensuite With Oversized Shower And Granite Counters.**
- ⌘ **2 Side By Side Parking Stalls - #41 & #42**
- ⌘ **Enjoy Life In This Awesome Unit With Vaulted Ceilings, Attractive Decor, 2 Bedrooms, 2 Bathrooms And 2 Parking Stalls. Club House/Recreation Center With Library, Exercise Room And Bathroom.**
- ⌘ **Annual Taxes: \$1,313.85**
- ⌘ **Strata Fees: \$240.56**



ESPRIT COMPLEX:





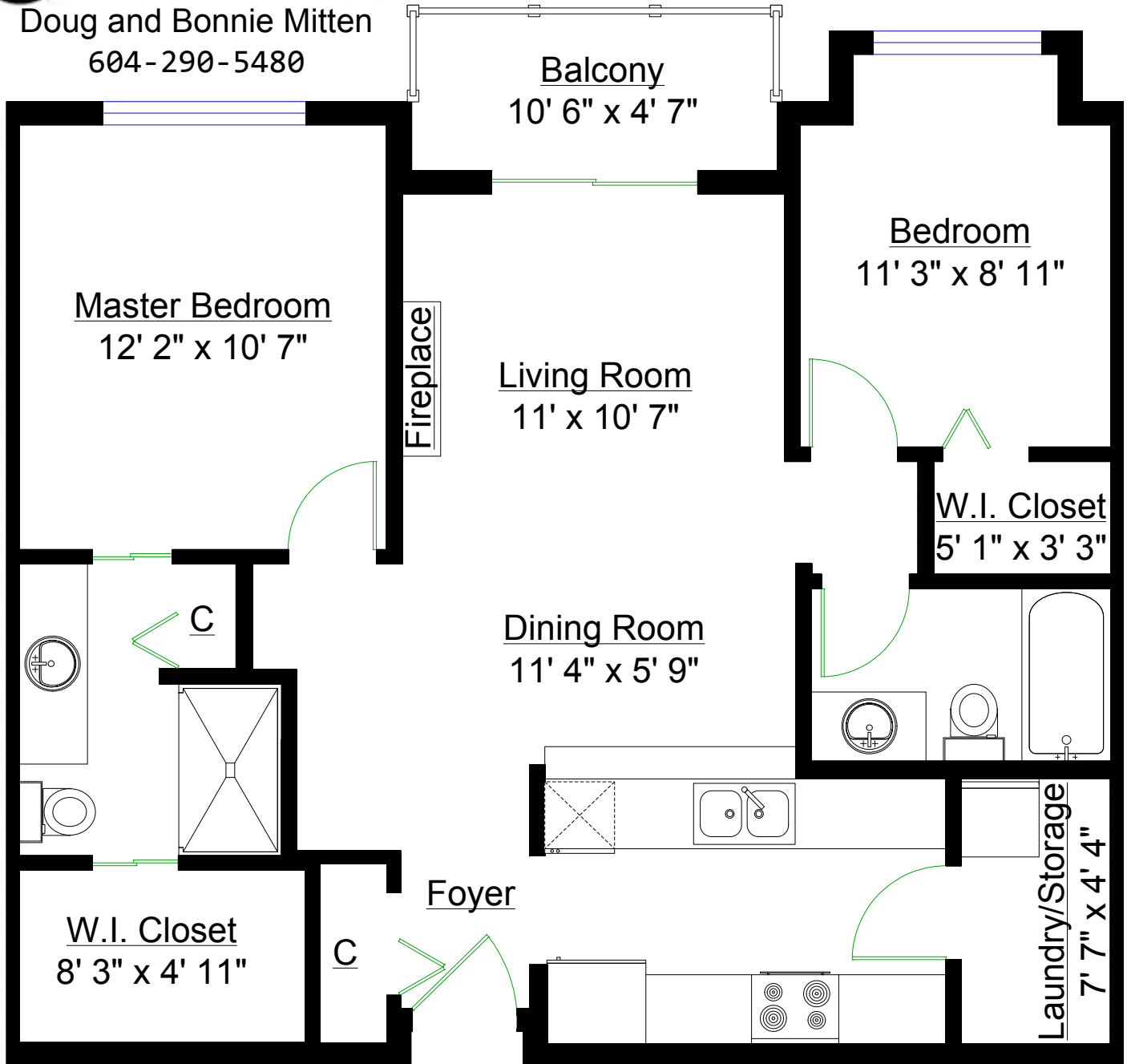
All information contained in this brochure while thought to be reliable is not guaranteed to be accurate and should be verified by the purchaser.

#410 – 19320 65th Avenue, Surrey



Prudential

Doug and Bonnie Mitten
604-290-5480



Totals**

Main Level: 874

Other Areas

Balcony: 48 sq. ft.