

For Multi-Picture Tours Go To:
www.mitten-realty-services.com



14928 62a Ave, Surrey

\$689,800.00

Traditional Plan With Craftsman Styling & Superior Quality Finish

Super two storey plus basement in centrally located Sullivan Plateau must be seen with hardwood floors, granite counters, gorgeous island kitchen with scads of cabinets and countertop space, spacious E/A and island with breakfast bar. Great room with cozy gas fireplace will facilitate your entertaining and family needs. Flex room can serve as den or parlour. Walk out off of the kitchen to spacious covered deck and rear yard with shed. Upstairs boasts two baths, loft area for you computer and office needs, and three spacious bedrooms including master bedroom with walk-in closet and four piece bath with twin sinks and oversized shower. Lower level is roughed in for bath and kitchen and has an electrical panel for the basement. With outside access the basement would be easy to suite.

Boasting tasteful decor, gorgeous hardwood floors, granite counters and spectacular kitchen this super home with great room plan is value priced below appraised value and offers a super opportunity for the discerning Buyer.

Doug or Bonnie Mitten



Prudential

Power Play
Realty

604-533-3231

All information contained in this brochure while thought to be reliable is not guaranteed to be accurate and should be verified by the purchaser.

Features Of This Fine Home...

Main Level: 1,008 Sq. Ft.

Great Room: 17'11 x 16'10 – Great room with gorgeous hardwood floors and cozy gas fireplace will facilitate your entertaining and family fellowship.



Dining Area: 13' x 9'10 – With tile floors, and door to rear.



Kitchen: 13'3 x 9'3 – Absolutely gorgeous kitchen with lots of dark wood cabinets with granite counters, island with breakfast bar and stainless appliances.





Flex Room: 11'9" x 11' – Can be used as a parlour for more intimate entertaining or as a den.



2 Piece Powder Room - With granite counter



Upper Level: 1,095 Sq. Ft.

Master Bedroom: 14'11 x 13'1



4-Piece Ensuite Bathroom



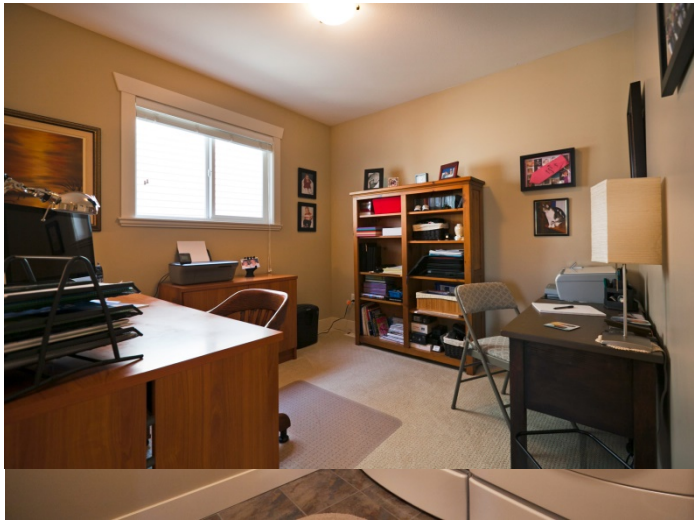
Bedroom: 12'3 x 10'9



Bedroom: 12'5 x 9'11



Loft Area: 9'6 x 9'1



Laundry Room



4-Piece Main Bathroom



Unfinished Basement: 1,007 Sq. Ft.

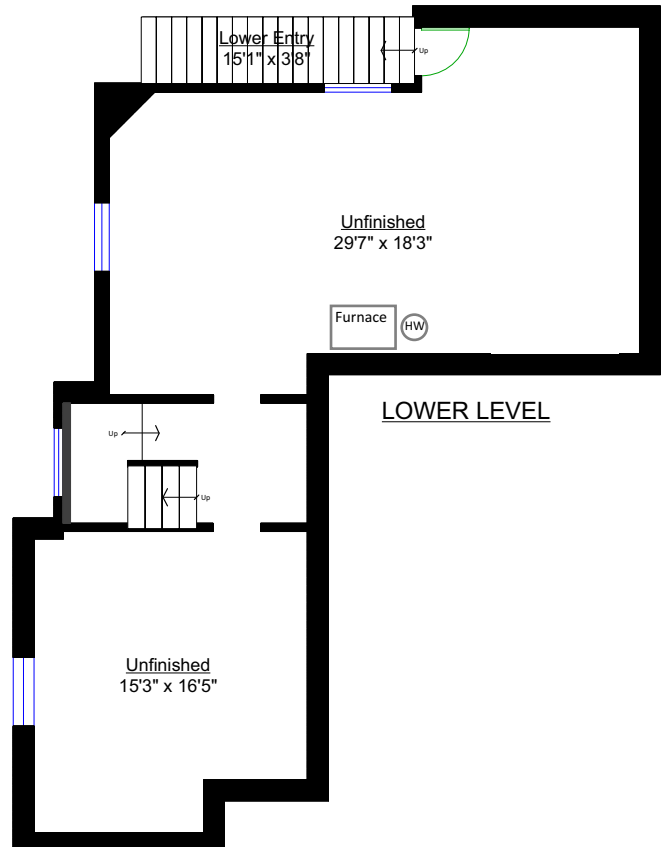
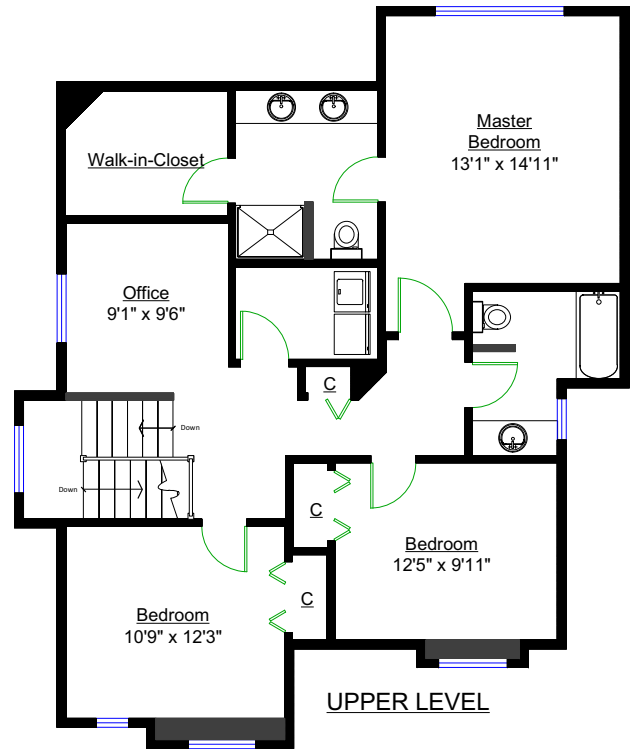
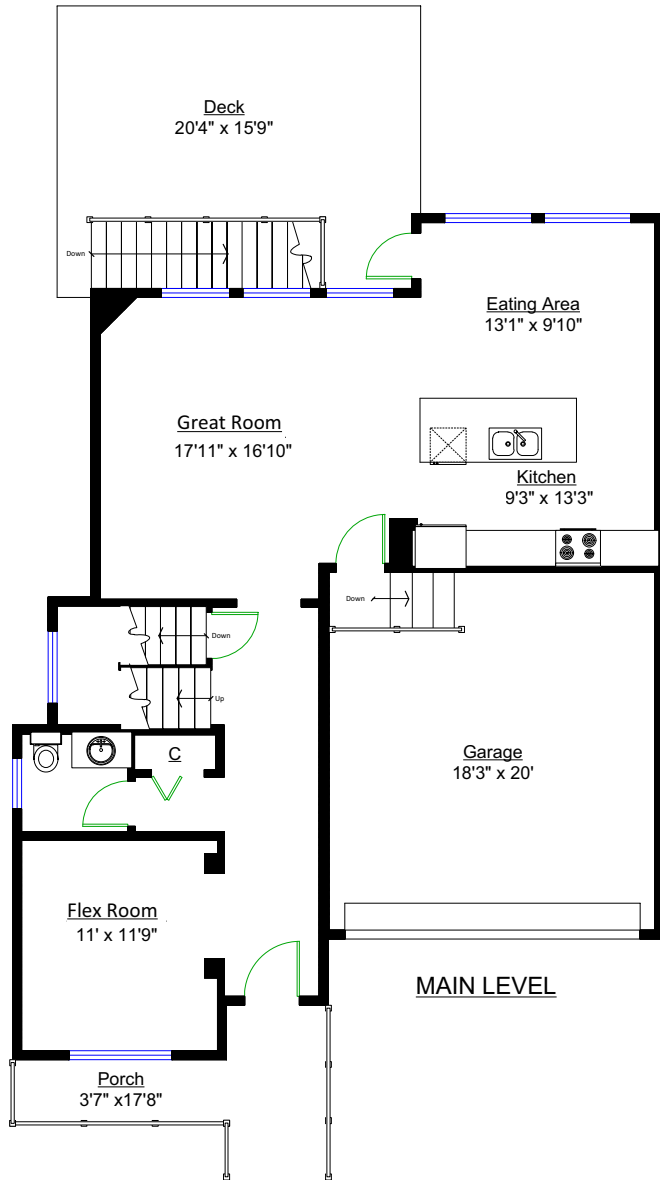
14928 62 Avenue, Surrey

Totals**

Main Level: 1,008 sq. ft.
 Upper Level: 1,095 sq. ft.
 TOTAL: 2,103 sq. ft.
 Unfinished Level: 1,007 sq. ft.
 GRAND TOTAL: 3,110 sq. ft.

Other Areas

Lower Entry: 56 sq. ft.
 Garage: 383 sq. ft.
 Porch: 98 sq. ft.
 Deck: 269 sq. ft.
 TOTAL: 806 sq. ft.



Prudential

Doug and Bonnie Mitten
 604-290-5480



FEATURES OF THIS FINE HOME:

- ⌘ **Super Two Storey Plus Basement In Centrally Located Sullivan Plateau Must Be Seen With Hardwood Floors, Granite Counters, Gorgeous Island Kitchen With Scads Of Cabinets An Countertop Space, Spacious E/A And Island With Breakfast Bar. Great Room With Cozy Gas Fireplace Will Facilitate Your Entertaining And Family Needs. Flex Room Can Serve As Den Or Parlour.**
- ⌘ **Walk Out Off Of The Kitchen To Spacious Covered Deck And Rear Yard With Shed.**
- ⌘ **Upstairs Boasts Two Baths, Loft Area For You Computer And Office Needs, And Three Spacious Bedrooms Including Master Bedroom With Walk-In Closet And Four Piece Bath With Twin Sinks And Oversized Shower.**
- ⌘ **Lower Level Is Roughed In For Bath And Kitchen And Has An Electrical Panel For The Basement. With Outside Access The Basement Would Be Easy To Suite.**
- ⌘ **Boasting Tasteful Decor, Gorgeous Hardwood Floors, Granite Counters And Spectacular Kitchen This Super Home With Great Room Plan Is Value Priced Below Appraised Value And Offers A Super Opportunity For The Discerning Buyer.**

LOT: 51.41' x Irregular – 3445 Sq. Ft.

