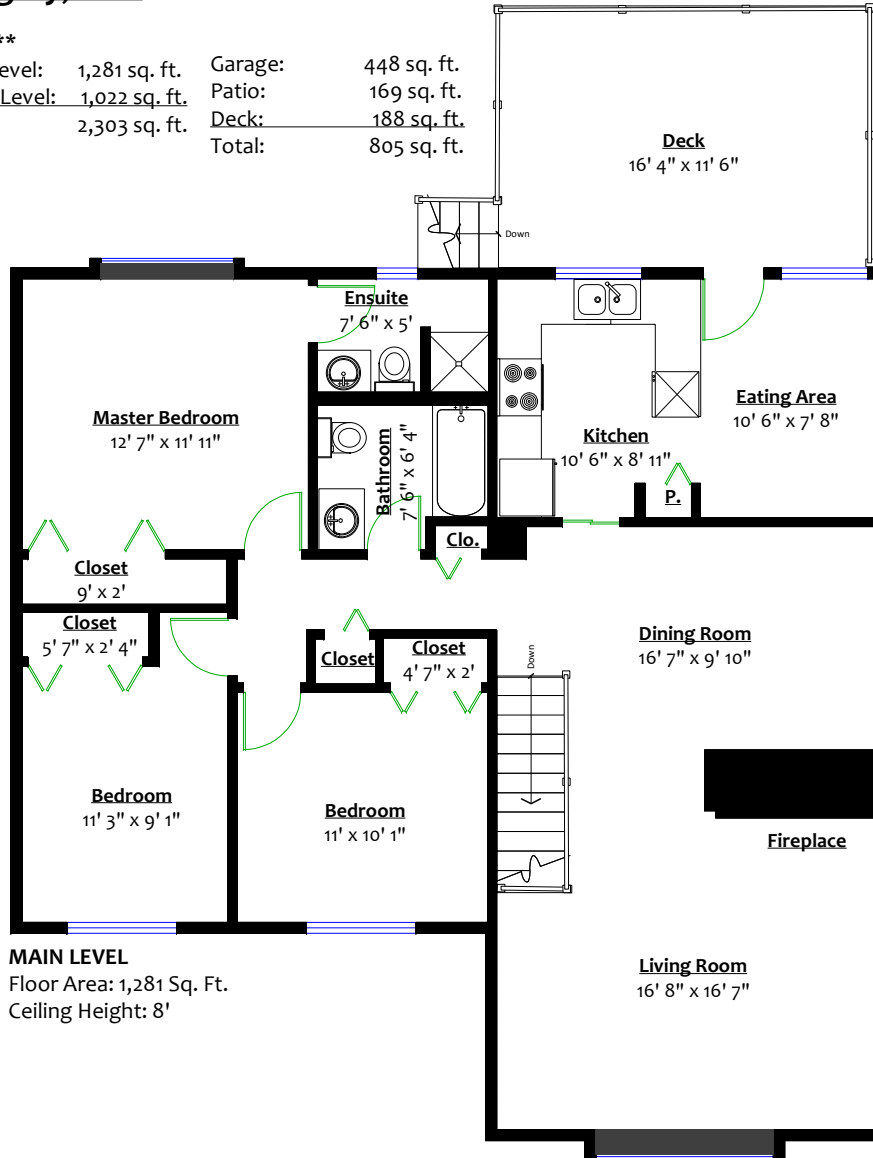


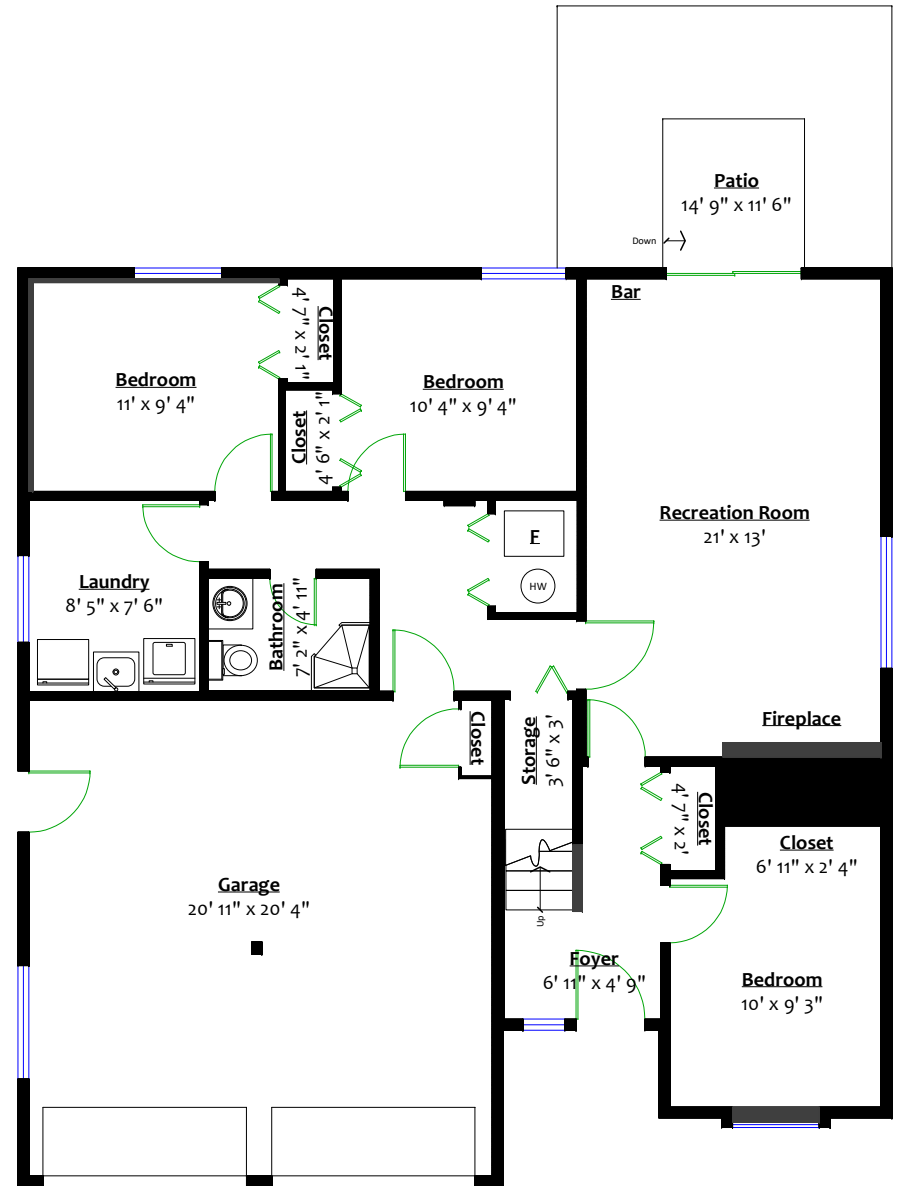
**21254 89B Avenue,
Langley, B.C.**

Totals**

Main Level:	1,281 sq. ft.	Garage:	448 sq. ft.
Lower Level:	1,022 sq. ft.	Patio:	169 sq. ft.
Total:	2,303 sq. ft.	Deck:	188 sq. ft.
		Total:	805 sq. ft.



MAIN LEVEL
Floor Area: 1,281 Sq. Ft.
Ceiling Height: 8'



LOWER LEVEL
Floor Area: 1,022 Sq. Ft.
Ceiling Height: 8'

