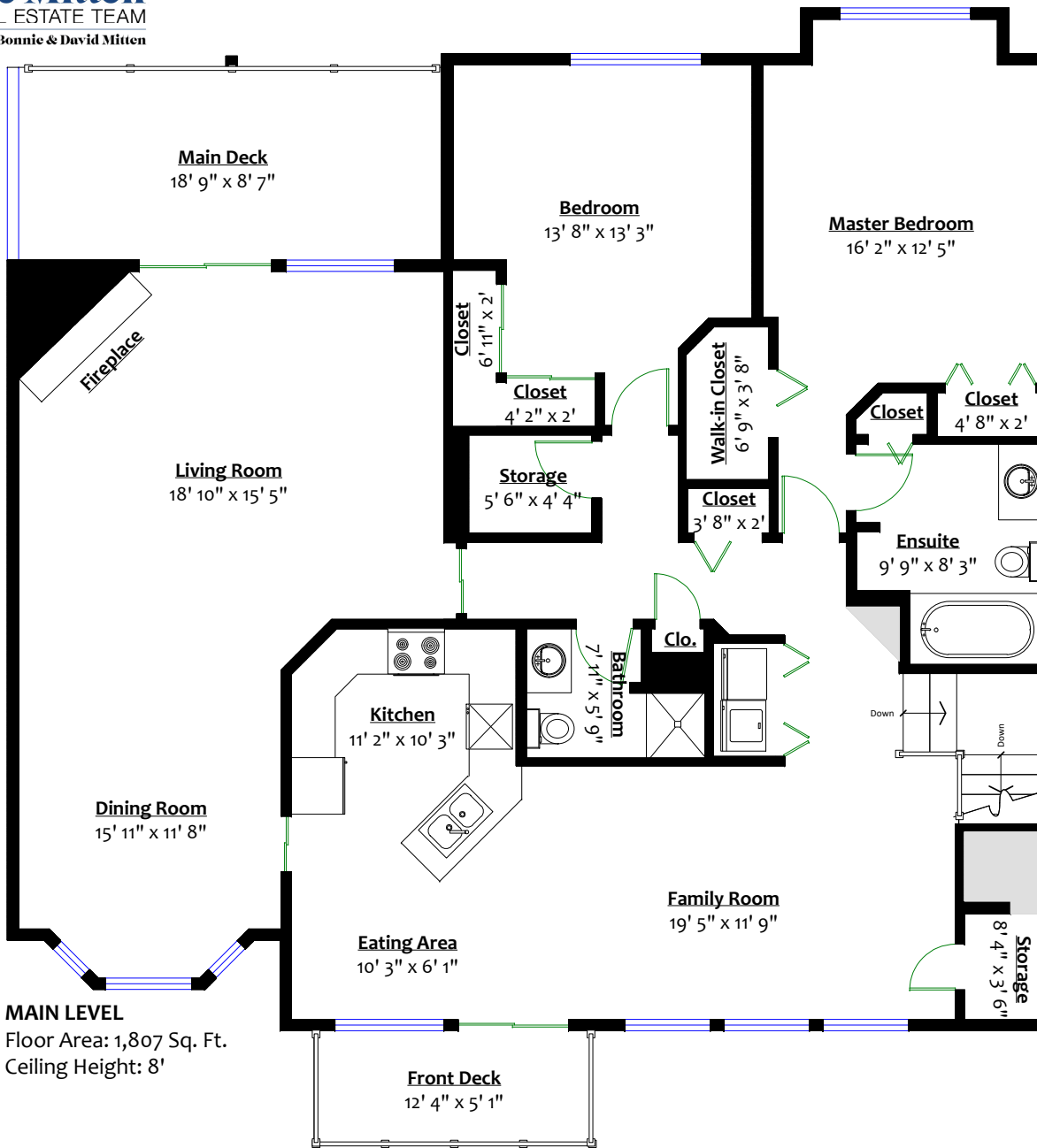


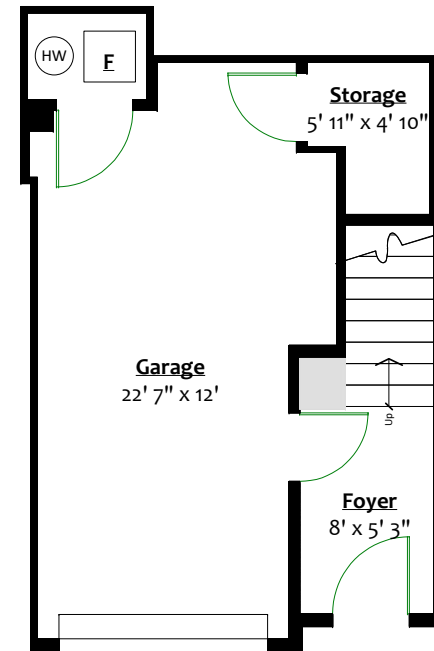
#178 – 20391 96 Avenue, Langley, B.C.



MAIN LEVEL
Floor Area: 1,807 Sq. Ft.
Ceiling Height: 8'

Totals**
Main Level: 1,807 sq. ft.
Lower Level: 86 sq. ft.
Total: 1,893 sq. ft.

Main Deck: 165 sq. ft.
Front Deck: 63 sq. ft.
Garage: 242 sq. ft.
Mechanical: 22 sq. ft.
Storage: 31 sq. ft.
Total: 523 sq. ft.



LOWER LEVEL
Floor Area: 86 Sq. Ft.
Ceiling Height: 8'

