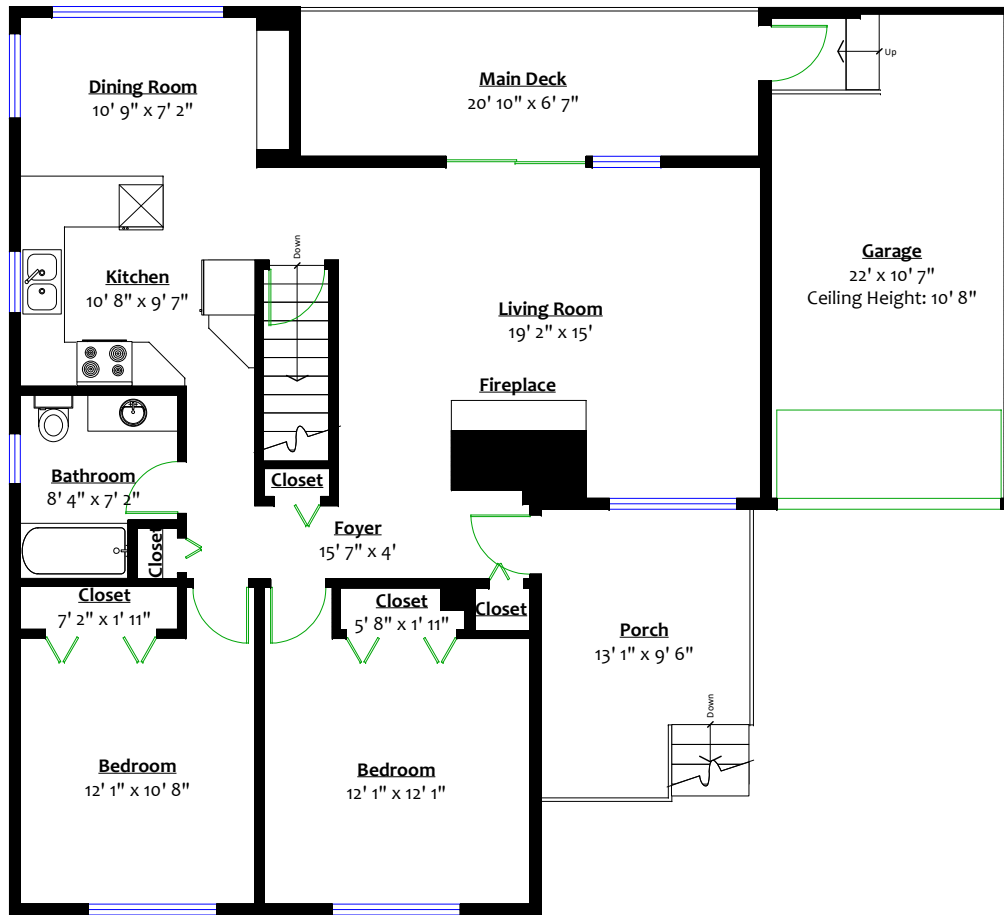


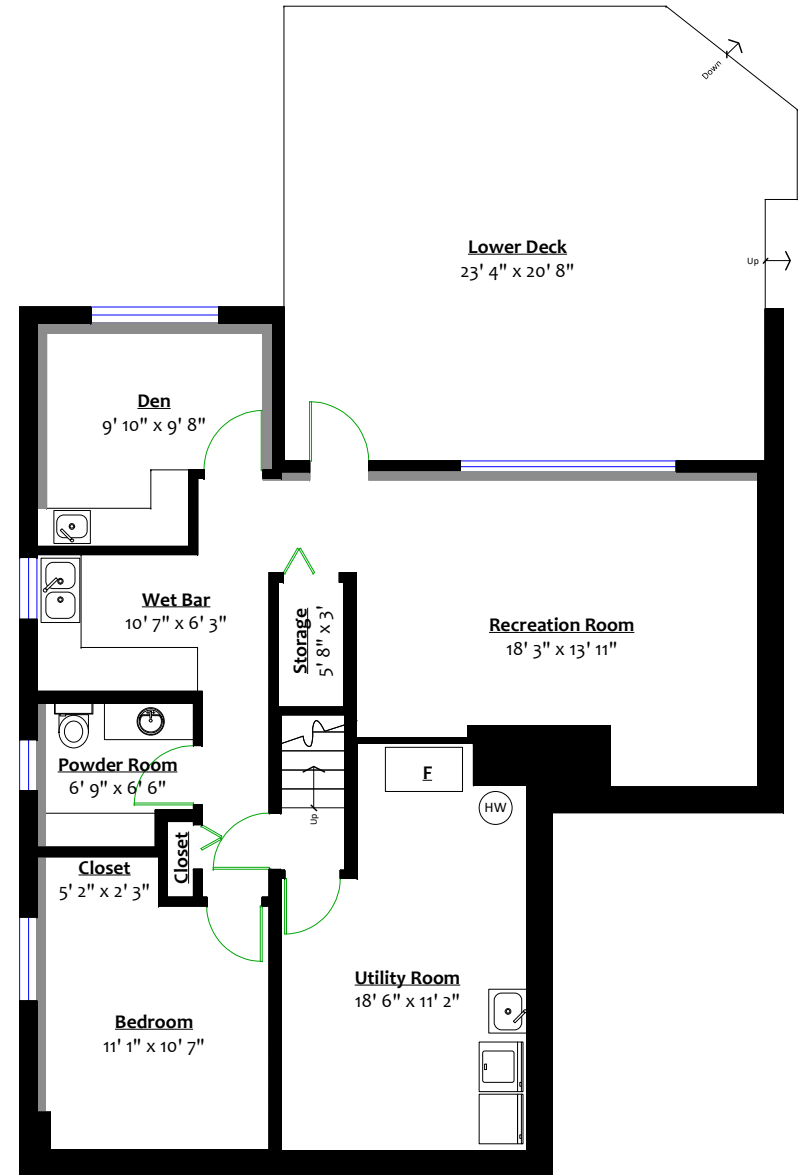
**21763 48 Avenue,
Langley City, B.C.**

Totals**

Main Level:	1,088 sq. ft.	Garage:	256 sq. ft.
Lower Level:	1,036 sq. ft.	Main Deck:	137 sq. ft.
Total:	2,124 sq. ft.	Porch:	113 sq. ft.
		Lower Deck:	450 sq. ft.
		Total:	956 sq. ft.



MAIN LEVEL
Floor Area: 1,088 Sq. Ft.
Ceiling Height: 8' 2"



LOWER LEVEL
Floor Area: 1,036 Sq. Ft.
Ceiling Height: 8'

